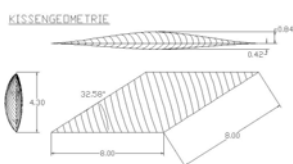
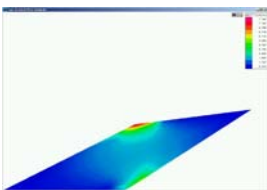
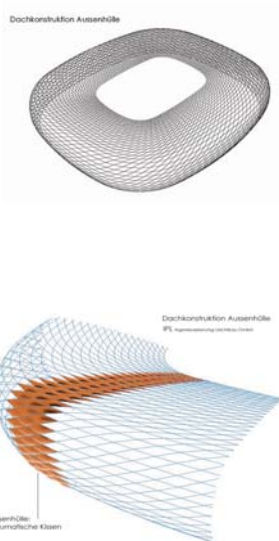


**Allianz Arena
Munich (D)
2002-2004**



EFTE foil cushions with
colour backlight
The cushions for façade
and roof are on a rhomboid
steel sub-structure.

Size of the façade and roof
60,000 m² of foil cushions,
39 km or 5664 steel
beams, 2784 cushions

Cushion material
ETFE 200/200 my and
250/250 my, transparent
inside, white outside
Roof completely
transparent

Architect: Herzog & de
Meuron
Primary steel planning:
SSP
Solid building: Arup

Façade design
TL 1-3 R. Fuchs
Structural engineering: IPL
GmbH

Façade planning
Design: R. Fuchs
Structural engineering: IPL
GmbH

Published
Detail 12/2002,
Bauingenieur April/May
2004